

E-Mail Security Gateway

Your Future for Secure E-Mail Communication

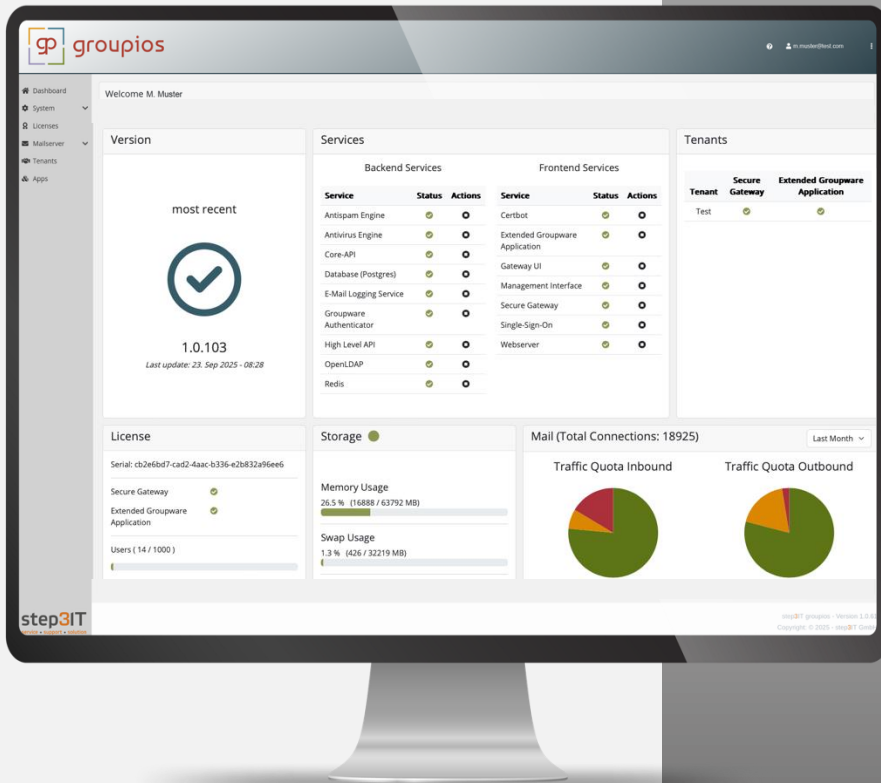


With groupios you combine powerful email security with user-friendly groupware and smart multi-tenant management.

100% GDPR compliant

99.9% availability

99.6% less spam



Optimization potential with groupios

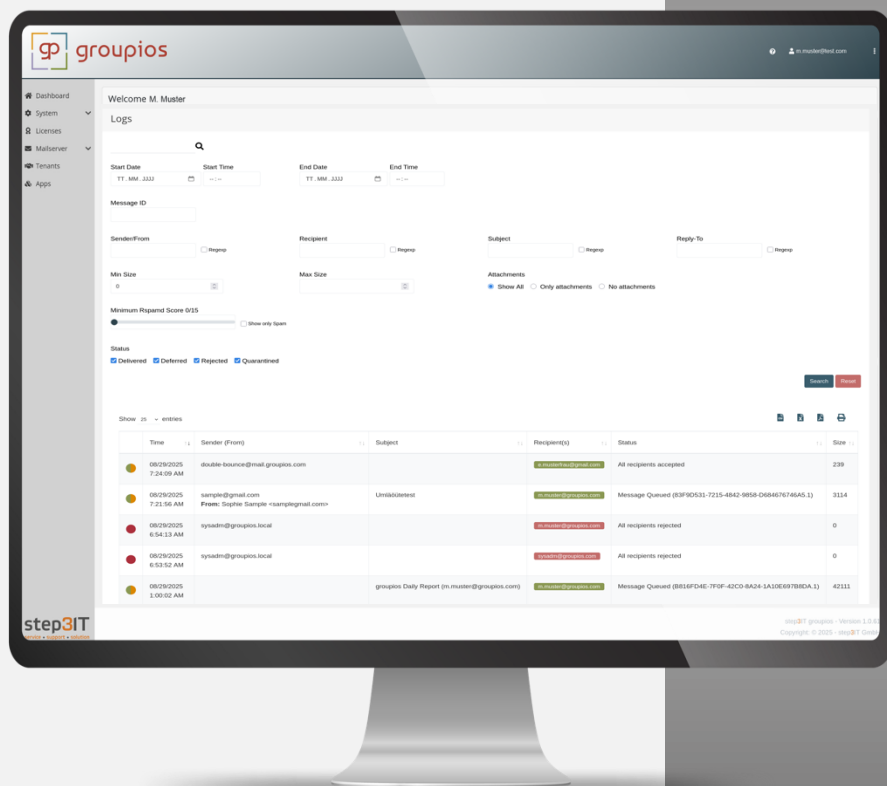
- Spam, virus, and manipulation protection
- Load balancing & high availability
- Real-time performance overview
- Future-oriented with S/MIME & worker concept
- Quarantine management

Empowerment with groupios

- Granular domain & email rule management
- Central control with multi-tenant capability
- Dashboard & system statistics in real time

E-Mail-Security-Gateway

Centralized Management, Easy Integration



- Real-Time Dashboard with System Status, Traffic & Quotas
- Analysis of the "Top 50 Daily Activities"
- Granular Evaluation of Log Data for Monitoring & Optimization
- Flexible Administration with multi-tenant interface for targeted permission allocation
- Management of Domains, Smart Hosts, White-/Blacklists & Message limits
- Permissions custom controllable

Uncompromising Email Security

- Integrated protection against spam, malware, and phishing
- Rspamd, ClamAV (including unofficial signatures) and attachment filters
- Pre- and post-checks (SPF, rDNS, HELO, watermarking, etc.)

For outgoing emails

- Automatic DKIM signature
- Management of keys directly in the interface
- Complete SPF & DMARC integration

Incoming Emails

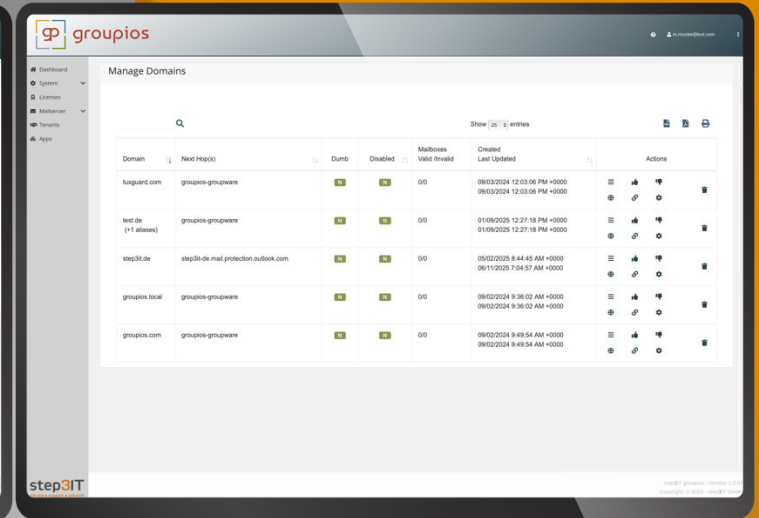
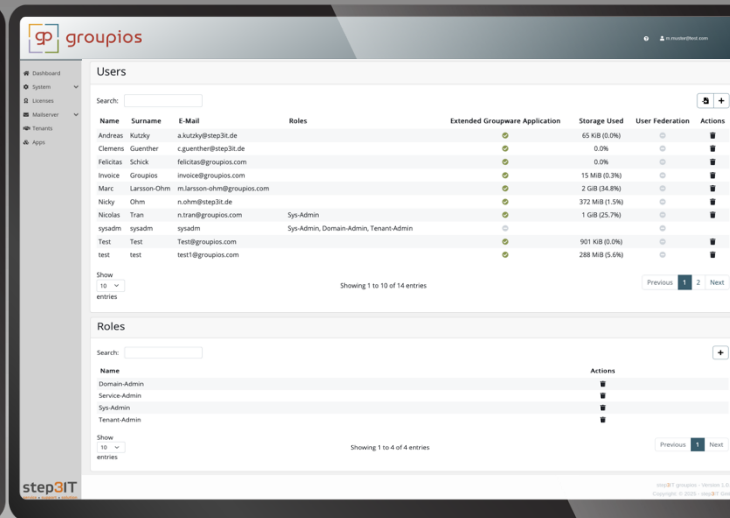
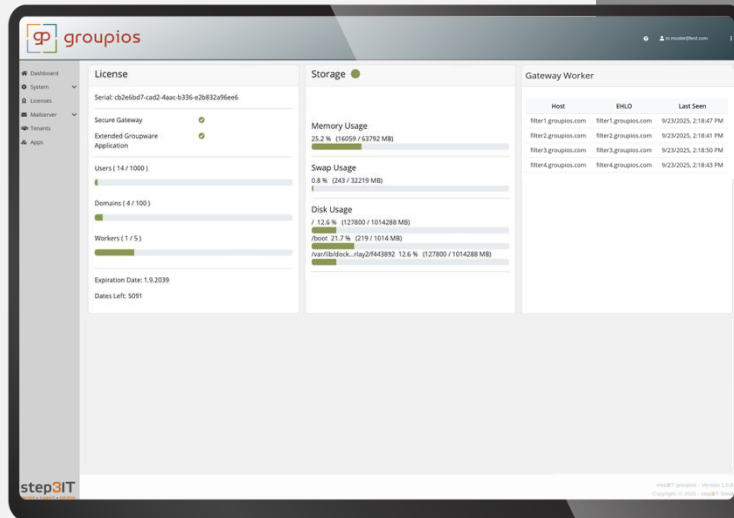
- Verification of DKIM & SPF
- Implementation of DMARC Policy
- Protection Against Spoofed Senders

S/MIME Encryption

- Encrypt & sign emails per industry standard
- Protection of confidentiality & authenticity of communication
- Integration in Outlook, Apple Mail & other common clients

E-Mail-Security-Gateway

Optimized and Efficient Processes



- **Worker Architecture:**
Distributed Instances with Central Management
- **High Availability:**
next instance takes over in case of failure
- **growing System:**
new instances can be added flexibly



- Fixing and assigning central administrative rights or for foreign branches
- Division of administrative rights into different levels

- Domain Management, simple and clear
- Central monitoring of traffic per domain
- Post-check of traffic with verification of data attachments
- Report and alert planning

Gateway Filter – E-Mail Threat Protection

Proactive Threat Defense

The groupios Gateway Filter stops over 99.6% of all email-based attacks before they reach your network, ensuring the integrity, availability, and smooth operation of your systems.

Maintaining Network Reputation

A clean, trustworthy network is a crucial part of your security strategy. By providing reliable protection against malware, phishing, and spam, the Gateway Filter actively supports the maintenance of your organization's email reputation.

Multilayered Security Architecture

As the first line of defense, groupios Threat Protection blocks dangerous content right at the gateway. The combination of multiple detection technologies strengthens your security infrastructure and significantly reduces the risk of data loss or system outages.

For Your Safety – Inbound/Outbound Filters

Combined Block List

Consolidates all recommended IP lists (blacklists, exploit lists, policy lists)

IP Spam Blocklist

Records IP addresses that have been sent to spam traps or manually classified as spammers

IP Exploit Blocklist

Lists IPs with suspicious behavior such as botnet activities, compromised hosts, proxies, VPNs, or TOR exit nodes

Domain Blocklist

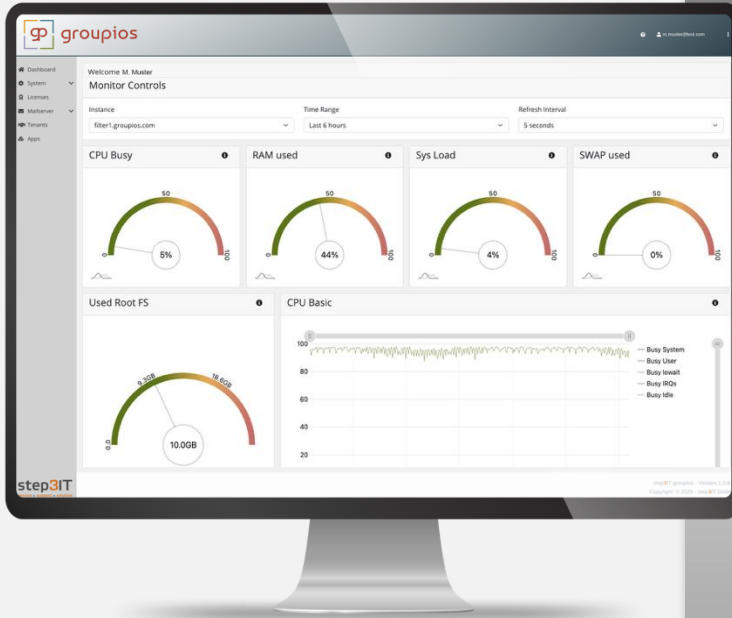
Captures suspicious domains and IPs from spam content as well as short URLs from spam messages

Authbl Blocklist

Short-term monitoring list (12 hours) for outgoing emails to quickly detect acute exploits with minimal false alarm risk



E-Mail-Security-Gateway



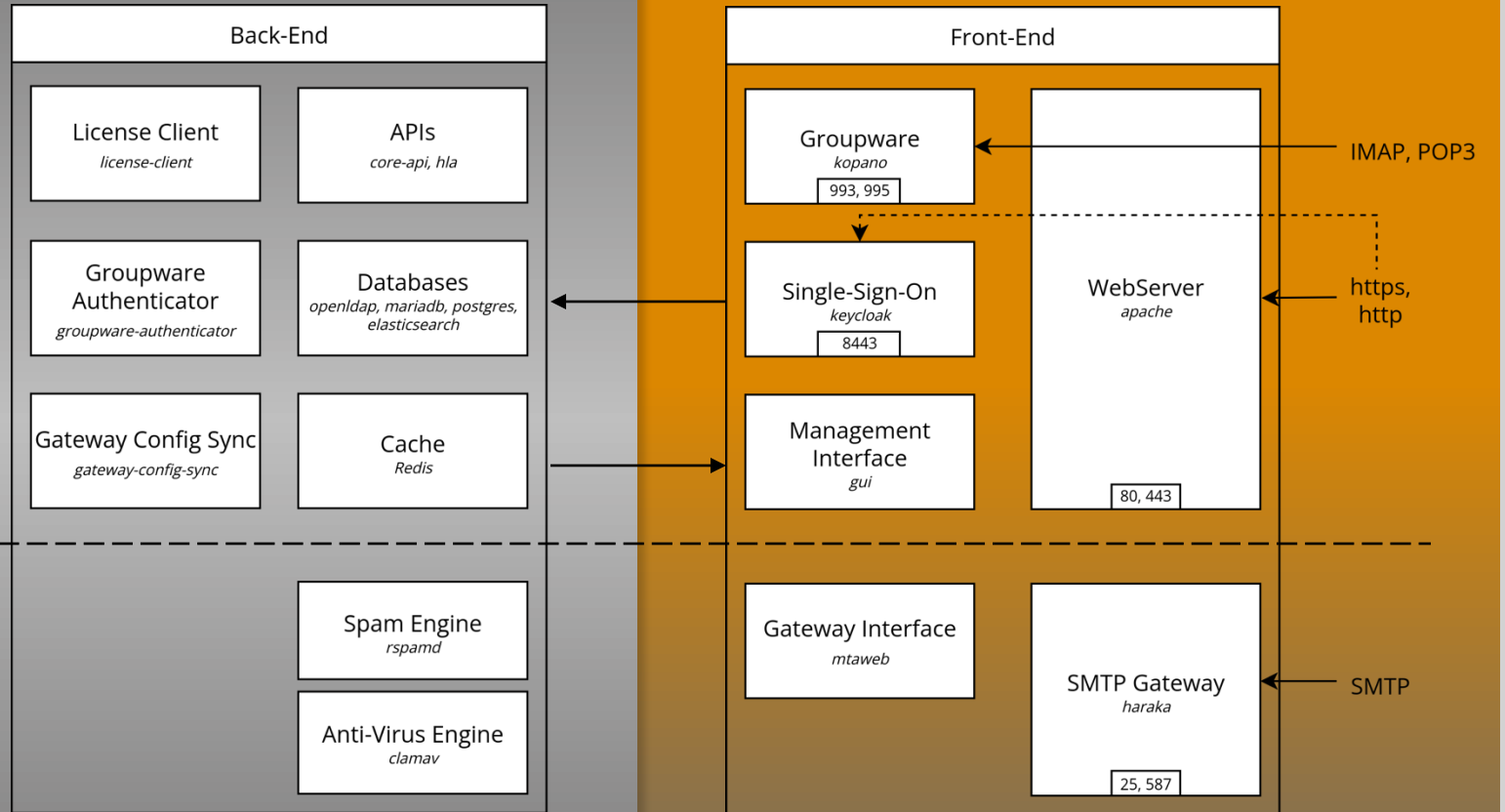
System Requirements

groupios Gateway

- 50 GB Hard Disk Space
- 8 Cores
- min. 16 GB RAM

groupios Worker

- 30 GB Hard Disk Space
- 2 Cores
- min. 8 GB RAM



Diagram

E-Mail-Security-Gateway

overview

High Availability & Performance

99.9% downtime-free operation

Real-time Dashboard & System Statistics

Load Balancing & Redundancy

Central Management

Multi-tenant & GDPR-compliant

Granular rights and domain management

Easy integration into existing systems

Scalable Architecture

Worker Concept for Distributed Instances

Flexible Expandability & High Operational Reliability

Maximum security

Protection against spam, malware & phishing (>99.6 %)

S/MIME encryption & signature

Full SPF, DKIM & DMARC integration

Proactive Threat Defense

Multilayered Security Architecture

Combined IP, Domain & Auth Blocklists

Protection of Network Reputation

